



M1709Z 17.3-Inch Digital Photo Frame With 8GB Micro USB Storage Owner's Manual

Got a Question or Need Help?

Email our technical support team at: support@miccatron.com for personalized assistance with the setup and use of this product. Please visit our product information website www.miccatron.com for the following:

- Firmware Updates
- User's Manuals
- Troubleshooting Wizard
- Technical Support Request

When contacting technical support, be sure to include your order information, product model, and serial number from the bottom of the player.

Copyright © 2009-2013 Micca, Ltd. All rights reserved.
This manual may not be reproduced in whole or in part without
permission for any purpose other than personal use.

1 Introduction

1.1 Preface

Thank you very much for purchasing this digital photo frame. We hope you will enjoy using it to view your treasured photos. This photo frame has the following features:

1.1.1 Highlights

- M1709Z: 17.3-Inch 1600x900 high resolution LCD screen
- 16:9 widescreen ratio for dramatic movie-like display effect
- Included 8GB micro USB storage drive
- Slim profile with curved back case design for modern appearance

1.1.2 Features

- Supports JPG image/photo files
- Supports MP3 music files
- Supports AVI and MP4 video files using MPEG1/2/4 video codecs
- Slideshow with background music
- Compact IR remote control
- USB 2.0 host connector supports USB flash drives
- Flash media card reader supports SD/SDHC cards
- Automatic photo slideshow, music, or video playback
- Auto power on/off feature with flexible scheduling
- Adjustable slideshow sequence, speed, and transition effects
- Clock and calendar with slideshow
- Adjustable screen brightness, contrast, and saturation
- Multiple language support: English, French, Italian, German, Spanish

Note: All the information contained in this manual was correct at the time of publication. However, as our engineers are always updating and improving the product, your device's software may have a slightly different appearance or modified functionality than presented in this manual.

2 Precautions

2.1 Precautions and Maintenance

- This product is intended for residential indoor use only. It is not intended for outdoors use, or use in harsh environments, or demanding commercial use.
- To avoid risk of fire or electric shock, do not expose the unit to moisture or condensation.
- To avoid overheating, do not block the ventilation holes on the digital photo frame.
- Keep the digital photo frame away from direct sunlight.
- Turn off the player and disconnect from AC power if not used for a while.
- Do not disassemble the digital photo frame. There is a risk of electric shock and there are no user-serviceable parts inside. Disassembling the digital photo frame will void its warranty.

2.2 Cleaning the LCD Screen

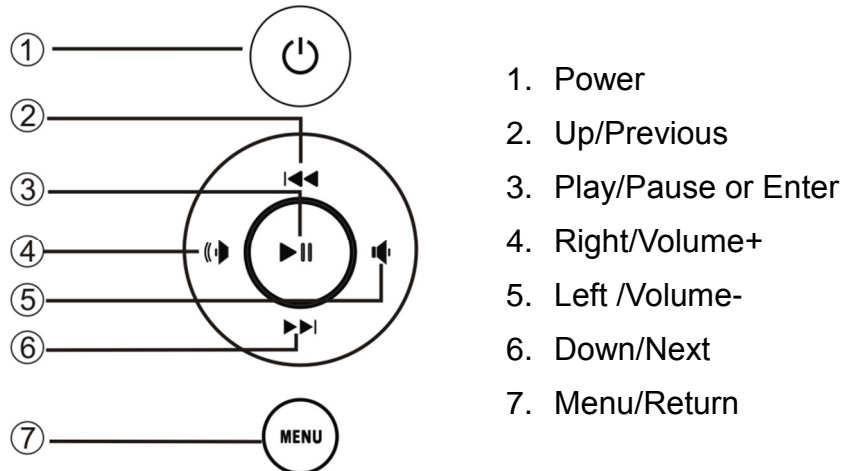
- Treat the screen gently and carefully. The screen of the digital photo frame has a glass component that can be damaged or broken when impacted.
- Use a soft, non-abrasive lint-free cloth such as microfiber camera lens cloth to gently wipe the LCD screen if fingerprints or dust accumulate on the LCD screen. If necessary, use a cleaning solution that's safe for coated camera photo lens cleaning. Spray the cleaning solution onto the cleaning cloth. **NEVER SPRAY CLEANING SOLUTION DIRECTLY ONTO THE LCD SCREEN.**

WARNING:

Please power off the unit before inserting or removing a memory card or USB drive. Do not put the unit near water or a high-moisture environment to prevent the risk of electric shock.

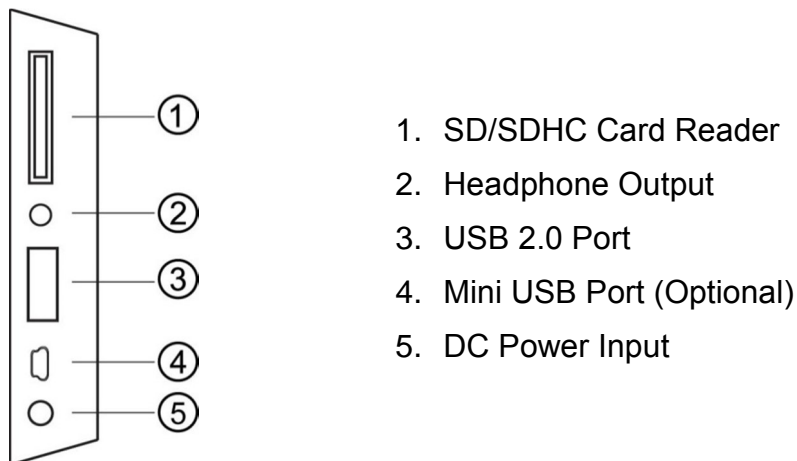
3 Connections and Buttons

3.1 Buttons



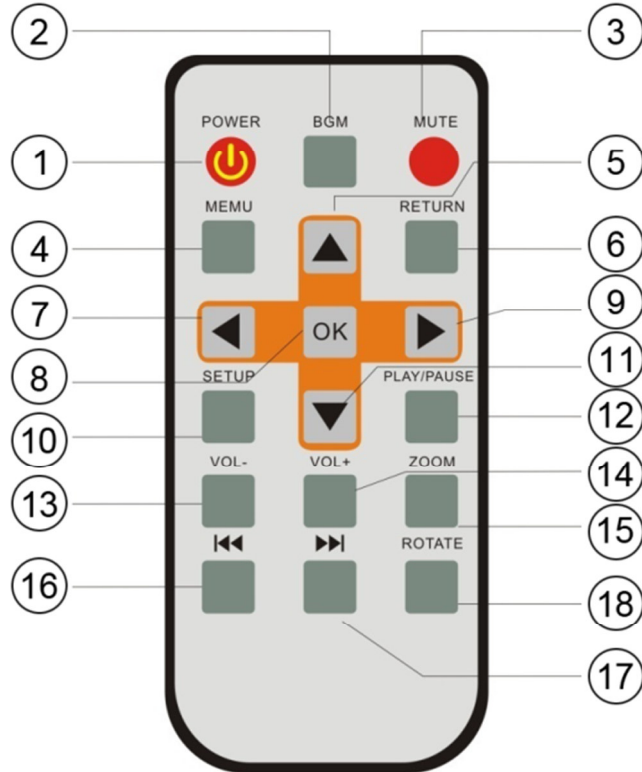
Note: The left and right buttons are named in accordance of their function when the user is looking at the front of the photo frame. Thus, pressing the “Left” button will move the cursor to the left and the “Right” button will move the cursor to the right.

3.2 Connections



Note: Only use the AC adapter that is provided with the digital photo frame. Using a different AC adapter may damage the unit. The Mini USB port is optional and may not be present.

3.3 Remote Control



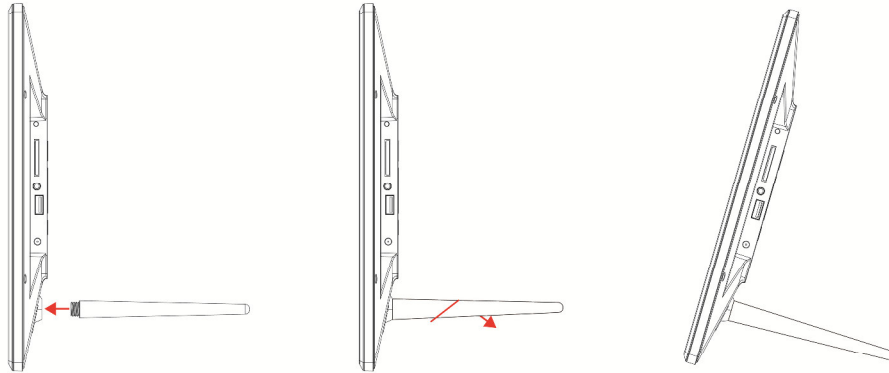
To replace the battery in the remote, place the remote control face down, press down on the ridged area of the battery cover and pull towards you to remove the tray. Place one CR2025 lithium button-cell battery on the tray with the positive “+” side facing you. Reinsert the tray.

Key	Function
1 Power	Turn the photo frame on or off
2 BMG	Start a slideshow with background music (background music must be enabled in the settings menu)
3 Mute	Mute or unmute the sound output
4 Menu	Return to the main menu
5 Up	Move cursor up, or go to previous photo during slideshow
6 Return	Go back to the previous step or screen
7 Left	Move cursor left, or fast-forward during music or video playback
8 OK	Play or pause photo slideshow, music, or video
9 Right	Move cursor right, or rewind during music or video playback
10 Setup	Go to the setup menu
11 Down	Move cursor down, or go to next photo during slideshow
12 Play/Pause	Play or pause photo slideshow, music, or video playback
13 Volume-	Decrease the volume during music or video playback
14 Volume+	Increase the volume during music or video playback
15 Zoom	Zoom in when viewing a photo (slideshow must be paused)
16 Previous	Go to previous file during music or video playback
17 Next	Go to next file during music or video playback
18 Rotate	Rotate a photo 90 degrees (slideshow must be paused)

4 Getting Started

4.1 Initial Setup

Find a flat and stable surface to place the photo frame. Install the prop-stand by inserting it into the mounting hole on the back of the photo frame.



Plug the AC adapter into a standard 110V AC or 240V AC electrical outlet and connect it to the DC Power Input on the photo frame. The photo frame should automatically turn on and display the main menu.

- Carefully remove the protective film covering the LCD.
- Remove the plastic battery insulator from the battery compartment and make sure the remote control has a battery inside.

Your digital photo frame is now ready for use.

4.2 Basic Usage

The photo frame is very easy to use. It is pre-configured from the factory with default settings that are already optimized for most users. Simply copy your favorite photos onto the included USB storage drive using a computer. Insert the USB storage drive into the USB jack on the photo frame, turn the photo frame on, and the photos will automatically begin displaying.

Mac OS users, please see additional instructions in the troubleshooting section at the end of this manual.

5 Operating Instructions

After turning on the photo frame, the main menu will display after a few seconds. If there is a flash memory card or USB flash drive inserted into the photoframe, a slideshow will automatically begin plain. To get back to the main menu, press the “Menu” button on the remote control, or press the “Menu/Return” button on the back of the photo frame.



The main menu contains icons for Photos, Music, Videos, File Operations, Calendar, and Setup.

5.1 Flash Memory Cards and USB Flash Drives

The photo frame supports SD/SDHC flash memory cards and USB flash drives, both up to 32GB in size. While the photo frame can handle high resolution photos directly from a digital camera, it is strongly recommended to resize photos down to a lower resolution of about one megapixel in size. This allows more photos to be stored on the storage device and smaller files results in more responsive operation by the photo frame.

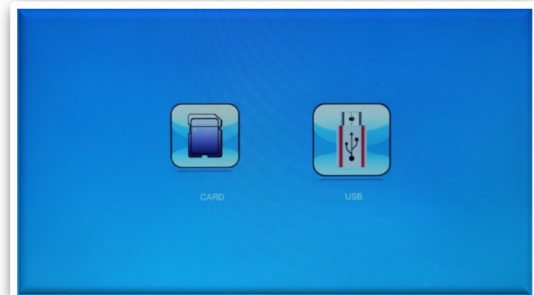
The photo frame comes with an 8GB micro USB storage drive that can be used to hold photos, music, or videos. The photo frame does not have any internal storage.

5.2 Choosing Storage Device

When more than one storage device is detected by the digital photo frame, it is necessary to select which storage device to use.

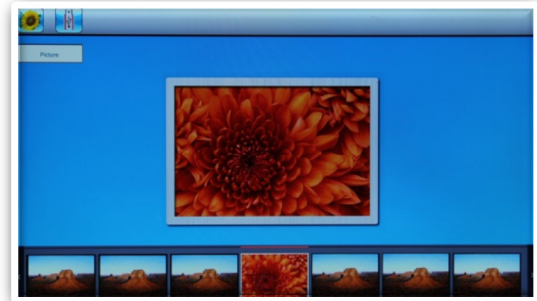
Once selected, all operations are on the selected storage device. To perform operations on another storage device, it is necessary to select it first.

To select a storage device, press the “Menu/Return” button repeatedly until the storage selection screen is shown. Highlight the desired storage device and press “Play/Pause/Enter” to select it.



5.3 Viewing Photos

When a storage device loaded with photos is inserted, the digital photo frame will automatically start displaying a photo slideshow when it is turned on. The user can also manually start a slideshow through the “Photo” icon from the main menu.



Background music will also begin playing if music files are found. To change this behavior, refer to detailed settings in Chapter 6.

When viewing photos, refer to **Section 3.3** for remote control functions available. The following operations are available using the buttons on the back of the photo frame:

Button	Description
Play/Pause	Play or pause the photo slide show.
Left/Volume-	Decrease background music volume (only if music is playing)
Right/Volume+	Increase background music volume (only if music is playing)
Up/Previous	Go to the previous photo.
Down/Next	Go to the next photo.
Menu/Return	Stop the slide show and return to the photo thumbnail menu.

5.4 Playing Music

To begin playing music, select the “Music” icon from the main menu. All supported music files found on the storage device will be displayed in one list. Only MP3 music files with an “mp3” file extension are supported. Scroll to the desired music file and press the “Play/Pause/Enter” button to begin playing the music.



While playing music, an on-screen playback control menu becomes active. The on screen menu contains the following menu items, from left to right:

Button	Description
Volume-	Turn down the playback volume.
Volume+	Turn up the playback volume.
Rewind	Press to rewind current song, press again to resume playing
Play/Pause	Press to pause current song, press again to resume playing
Fast Forward	Press to fast forward current song, press again to resume playing
Shuffle/Loop	Press to toggle between different shuffle and loop playback

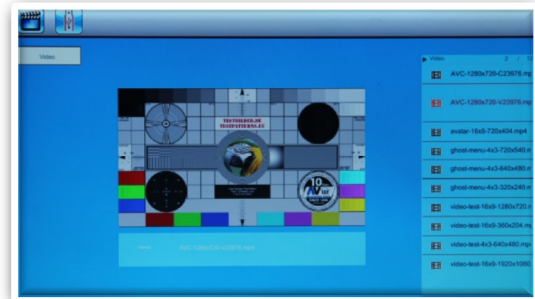
Refer to **Section 3.3** for remote control functions available. The following operations are available using the buttons on the back of the photo frame:

Button	Description
Play/Pause	Press the currently selected on-screen menu item
Left/Volume-	Highlight the previous on-screen menu item
Right/Volume+	Highlight the next on-screen menu item
Up/Previous	Go to the previous music file.
Down/Next	Go to the next music file.
Menu/Return	Stop the playback and return to the main menu.

5.5 Playing Videos

To begin playing videos, select the “Video” icon from the main menu. All supported video files found on the storage device will be displayed in one list. Scroll to the desired video file and press the “Play/Pause/Enter” button to begin playing the video.

Only video files with an “mp4” or “avi” file extension are supported. If a video file does not play, then it is likely not in a supported format. It is possible to convert such videos into a compatible format by using freely available software tools such as Handbrake.

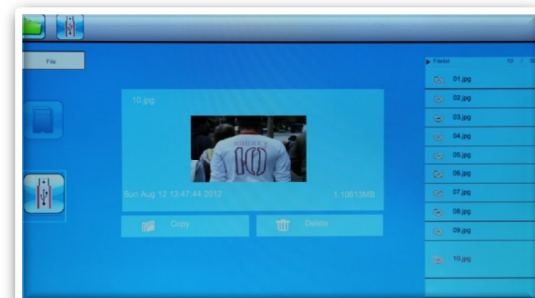


While playing videos, refer to **Section 3.3** for remote control functions available. The following operations are available using the buttons on the back of the photo frame:

Button	Description
Play/Pause	Play or pause the video.
Left/Volume-	Turn down the playback volume.
Right/Volume+	Turn up the playback volume.
Up/Previous	Go to the previous music file.
Down/Next	Go to the next music file.
Menu/Return	Stop the playback and return to the video selection menu.

5.6 File Browsing

The “File” icon from the main menu lets users browse the contents of the selected storage device by navigating its folder directory structure. All compatible photo, music, and video file types will be displayed while incompatible file types are not displayed.



It is possible to delete files and folders while browsing the folder directory structure. It is strongly recommended that a computer be used to delete files and folders from a storage drive instead since a computer is much faster and more convenient. To delete a file or folder, highlight it using the cursor and press the “Left” button to get to the “Delete” on-screen button. Press the “Play/Pause/Enter” button once to initiate deletion.

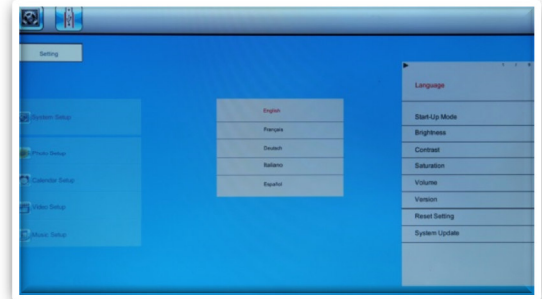
5.7 Calendar

To view the calendar, select the “Calendar” icon from the main menu. Be sure to properly set the date and time in the settings menu so that the information displayed is correct. The photo frame will automatically begin playing a slideshow using photos found on the selected storage device.



6 Detailed Settings

To access the setup menu of the photo frame, turn it on and wait for the main menu to display. Highlight the Setup icon and press “Enter”. The Setup menu is divided up into five sections as detailed below. Use the “Up” and “Down” buttons to highlight a configuration section and press “Play/Pause/Enter” to select it. Within a configuration section, use the “Up” and “Down” buttons to highlight a settings item, press “Play/Pause/Enter” to select the settings item and change its value. Press the “Menu/Return” button to exit the settings menu when finished.



6.1 System Setup

Language

Changes the operating language of the photo frame.

Available Values: *English, French, Italian, German, Spanish*

Start Up Mode

Sets the operation mode of the photo frame when it is turned on.

Setting	Description
Photo	Play a photo slideshow
Music	Play music files.
Video	Play video files.
Calendar	Display the calendar.
Main Menu	Display the main menu.

Brightness, Contrast, Saturation

Changes the display parameters of the LCD screen. The default values are optimal for most conditions.

Volume

Sets the speaker volume during music and video playback.

Version

Display the current firmware version information

Reset Settings

Reset all settings back to factory defaults.

System Upgrade

Upgrade the photo frame firmware. When a new version of the firmware is available, detailed instructions for its installation will be provided along with the update.

6.2 Photo Setup

Display Mode

Sets the behavior when selecting the “Photo” icon from the main menu.

Setting	Description
Slideshow	Begins displaying slideshow with all photos found on the currently selected storage device.
Thumbnail	Displays thumbnail view of photo files and folders.

Slideshow Repeat

Configures whether the slide show loops continuously, or stop after playing once.

Available Values: *Once, Loop*

Slideshow Sequence

Changes the photo playback sequence when displaying slideshows.

Setting	Description
Sequential	Photos will be displayed in their normal sequence alpha-numerically based on file name.
Random	Photos will be displayed in random sequence.

Background Music

Enable or disable background music when viewing photo slideshows.

Available Values: *On, Off*

Display Ratio

Changes the way photos are displayed when they do not perfectly fit the screen of the photo frame.

Setting	Description
Original	Black bars will be added to the top or bottom of photos that are too narrow or too wide relative to the screen.
Full	Photos are cropped on the top/bottom or on the sides to fit the screen.

Slide Speed

Sets the time interval between each photo in a slideshow.

Available Values: *3/5/15/30 Seconds, 1/5/15 Minutes*

Slideshow Effect

Sets the transition effect as one photo switches to the next in a slideshow.

Available Values: *Random (default), and a selection of various transition effects.*

6.3 Calendar Setup

Date

Set the current date in the format of Year, Month, and Day.

Available Settings: *Year, Month, Day*

Time Format

Change to display the time in either 12-hour or 24-hour time format.

Available Values: *12 Hours, 24 Hours*

Time

Set the current time in the format of Hour, Minute, and Second.

Available Settings: *Hour, Minute, Second*

Alarm Status

Enable or disable the alarm function

Available Settings: *On, Off*

Alarm Time

Set the alarm time in the format of Hour and Minute.

Available Settings: *Hour, Minute*

Alarm Tone

Configures the alarm sound.

Available Settings: *Alarm 1, Alarm 2, Alarm 3*

Alarm Frequency

Configures the days on which the alarm will be enabled.

Setting	Description
Once	Alarm is active only once.
Every Day	Alarm is active every day.
Mon. to Fri.	Alarm is active Monday through Friday
Weekend	Alarm is active on Saturday and Sunday

Auto Power On

Set the auto power on time in the format of Hour and Minute. The On/Off setting enables or disables the auto power on feature.

Available Settings: *Hour, Minute, On/Off*

Auto Power Off

Set the auto power off time in the format of Hour and Minute. The On/Off setting enables or disables the auto power off feature.

Available Settings: *Hour, Minute, On/Off*

Auto-Power Frequency

Configures the days on which the auto power on/off feature will be enabled.

Setting	Description
Once	Feature is active only once.
Every Day	Feature is active every day.
Mon. to Fri.	Feature is active Monday through Friday
Weekend	Feature is active on Saturday and Sunday

6.4 Video Setup

Display Ratio

Configures the way videos are displayed when they do not perfectly fit the screen of the photo frame.

Setting	Description
Original	The video will be played in the display ratio. Black bars will be added to the top/bottom or sides as needed.
Full Screen	The video will be stretched or squeezed to fit the full screen.

Repeat Mode

Changes the video playback sequence.

Setting	Description
Once	A single video will play once and then stop.
Single Repeat	A single video will be looped continuously.
Sequence	Videos will be looped continuously in their normal sequence alpha-numerically based on file name.
Random	Videos will be played continuously in random sequence.

6.5 Music Setup

Play Mode

Changes the music playback sequence.

Setting	Description
Once	A single music file will play once and then stop.
Single Repeat	A single music file will be looped continuously.
Sequence	Music files will be looped continuously in their normal sequence alpha-numerically based on file name.
Random	Music files will be played continuously in random sequence.

7 Troubleshooting Guide

Cannot Read A SD/SDHC Card or USB Drive

The photo frame supports SD/SDHC and USB flash drives up to 32GB in size, using FAT32 file system. Check to be sure that the SD card or USB drive meets these requirements. It may be necessary to reformat the SD card or USB drive. Be sure to copy photos off the drive before doing so as formatting the drive permanently erases the contents. Select FAT32 as the file system when reformatting the drive.

Apple Mac Computer Users

The Mac OS operating system creates numerous hidden folders and thumbnail files that are proprietary to the Mac OS and are not well supported by non-Apple products. Using Mac OS to copy files onto a SD card or USB drive for use with the photo frame will sometimes lead to strange behavior. There are free utilities available for the Mac OS to prevent these hidden folders and thumbnail files. Mac users are strongly recommended to use such a utility.

Cannot Play a File

Make sure that the file is compatible with the photo frame. The photo frame supports JPG photo files, MP3 music files up to 320kbps, and video files with AVI or MP4 extension encoded with MPEG1/2/4 for video and MP3 for audio. If a video file does not play, then it is likely not in a supported format. It is possible to convert such videos into a compatible format by using freely available software tools such as Handbrake.

Not Showing All Photos or Showing Same Photos Repeatedly

First, try reformatting the SD card or USB drive that is used to hold the photos. Be sure to copy photos off the drive before doing so as formatting the drive permanently erases the contents. Select FAT32 as the file system when reformatting the drive. Copy photos back onto the SD card or USB drive after formatting.

If problem persists after reformatting the drive, there are possibly one or more corrupted or unsupported progressive-format files in the collection of photos. Because it would be time consuming and difficult to isolate the problematic image(s), it is recommended to reprocess all images in batch mode using a free utility such as Irfanview. Doing so typically fixes issues caused by corrupted image files. Irfanview comes with detailed instructions on how to reprocess JPG files in batch mode.

8 Specifications

Adapter: Input 100-240V 50/60Hz AC, Output 9V/1.5A DC

Card Reader: SD/SDHC Up to 32GB

USB: USB flash drives up to 32GB

Photo Format: JPG

Music Format: MP3 up to 320kbps

Video Format: AVI MP4 Files, MPEG1/2/4 for video and MP3 for audio

LCD Screen:

M1709Z	
Size	17.3-Inch TFT
Resolution	1600x900
Aspect Ratio	16:9
Brightness	250-500cd/m2
Contrast	500-1000:1
Response Time	20ms

Information in this manual is believed to be accurate and reliable but Micca Ltd assumes no responsibility for its use nor for any infringement of patents or other rights of third parties which may result from the use of this manual or the product. Micca reserves the right to change product specifications at any time without notice.

Micca, M1709Z, and the Micca logo are trademarks of Micca Ltd. Other trademarks referenced in this manual are the properties of their respective owners.

© 2013 Micca Ltd. All rights reserved.

Copyright © 2009-2013 Micca, LTD. All rights reserved.